

MCCLELLAN PARK

INDUSTRIAL BUILDING

BUILDING

1048



**5711 PERRIN AVENUE
MCCLELLAN, CA 95652**

BUILDING FEATURES:

TOTAL BUILDING: 28,659 SF

- OFFICE SPACE: 5,000 SF
- COLUMN SPACING: 20X20
- CLEAR HEIGHT: 20'
- GRADE LEVEL DOORS: 10- (20X15)
- YARD: 15,000 SF
- FIBER READY
- BUILDING SIGNAGE OPPORTUNITY
- AMPLE PARKING: 1:1,000
- ON-SITE SECURITY
- CLOSE PROXIMITY TO WATT & I-80 FREEWAYS
- FULL BROKER COOPERATION
 - RUNWAY TO RICHES INCENTIVE PROGRAM



LOCAL AMENITIES:

- FULL SERVICE HOTEL & CONFERENCE CENTER
- FULL SERVICE AIRPORT AND FBO
- MCCLELLAN FACILITY SERVICES (AVAILABLE FOR CONTRACT)
- ONSITE RESTAURANTS
- REGIONAL TRANSIT SHUTTLE TO LIGHTRAIL



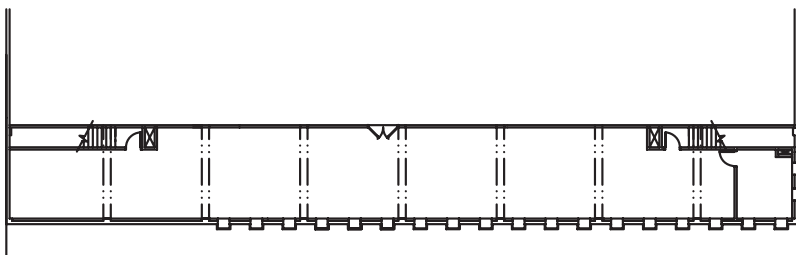
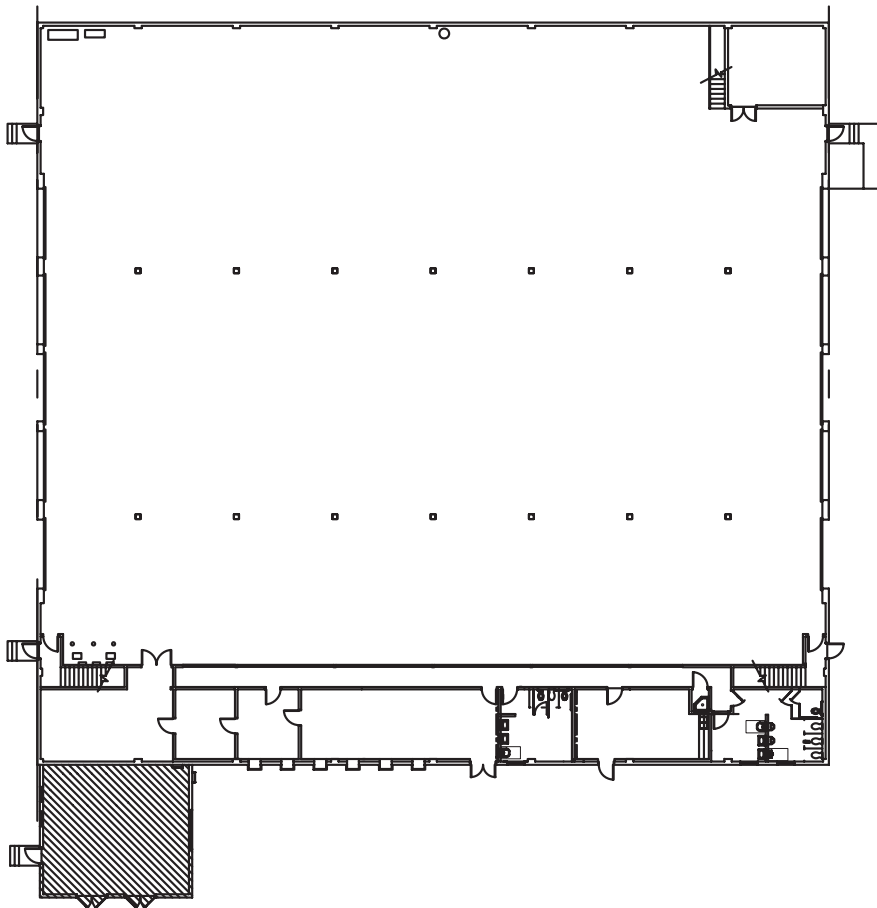
FOR MORE INFORMATION: 916.965.7100

MCCLELLAN PARK

FLOOR PLAN & LOCATION

BUILDING

1048



5711 PERRIN AVENUE
MCCLELLAN, CA 95652

FROM WATT AVENUE
NORTH:

- › LEFT ON JAMES WAY
- › RIGHT ON PERRIN AVE.

COME TO
5711 PERRIN AVENUE

MCCLELLAN PARK IS LOCATED
WITHIN MINUTES OF LOCAL
FREEWAYS.

RT PROVIDES TRANSIT
THAT LINKS YOU FROM THE
PARK TO THE LOCAL LIGHTRAIL.

CONTACT:

KEN GIANNOTTI
916.570.5374

GREG CUTLER
916.570.5391

LEASING@MCCLELLANPARK.COM

WWW.MCCLELLANPARK.COM