

MCCLELLAN PARK

INDUSTRIAL BUILDING

BUILDING

251



**3028 PEACEKEEPER WAY
MCCLELLAN, CA 95652**

BUILDING FEATURES:

TOTAL BUILDING: 315,560 SF
DIVISIBLE MIN: 70,000 SF MAX: 177,000 SF

- OFFICE SPACE: 9,000 SF
- COLUMN SPACING: FREE SPAN
- CLEAR HEIGHT: 50'
- GRADE DOORS: HANGAR STYLE
- FIBER READY
- BUILDING SIGNAGE OPPORTUNITY
- AMPLE PARKING: 1:1,000 SF
- ON-SITE SECURITY
- CLOSE PROXIMITY TO WATT & I-80 FREEWAYS
- FULL BROKER COOPERATION
 - RUNWAY TO RICHES INCENTIVE PROGRAM

LOCAL AMENITIES:

- FULL SERVICE HOTEL & CONFERENCE CENTER
- FULL SERVICE AIRPORT AND FBO
- MCCLELLAN FACILITY SERVICES (AVAILABLE FOR CONTRACT)
- ONSITE RESTAURANTS
- REGIONAL TRANSIT SHUTTLE TO LIGHTRAIL



McClellan Park

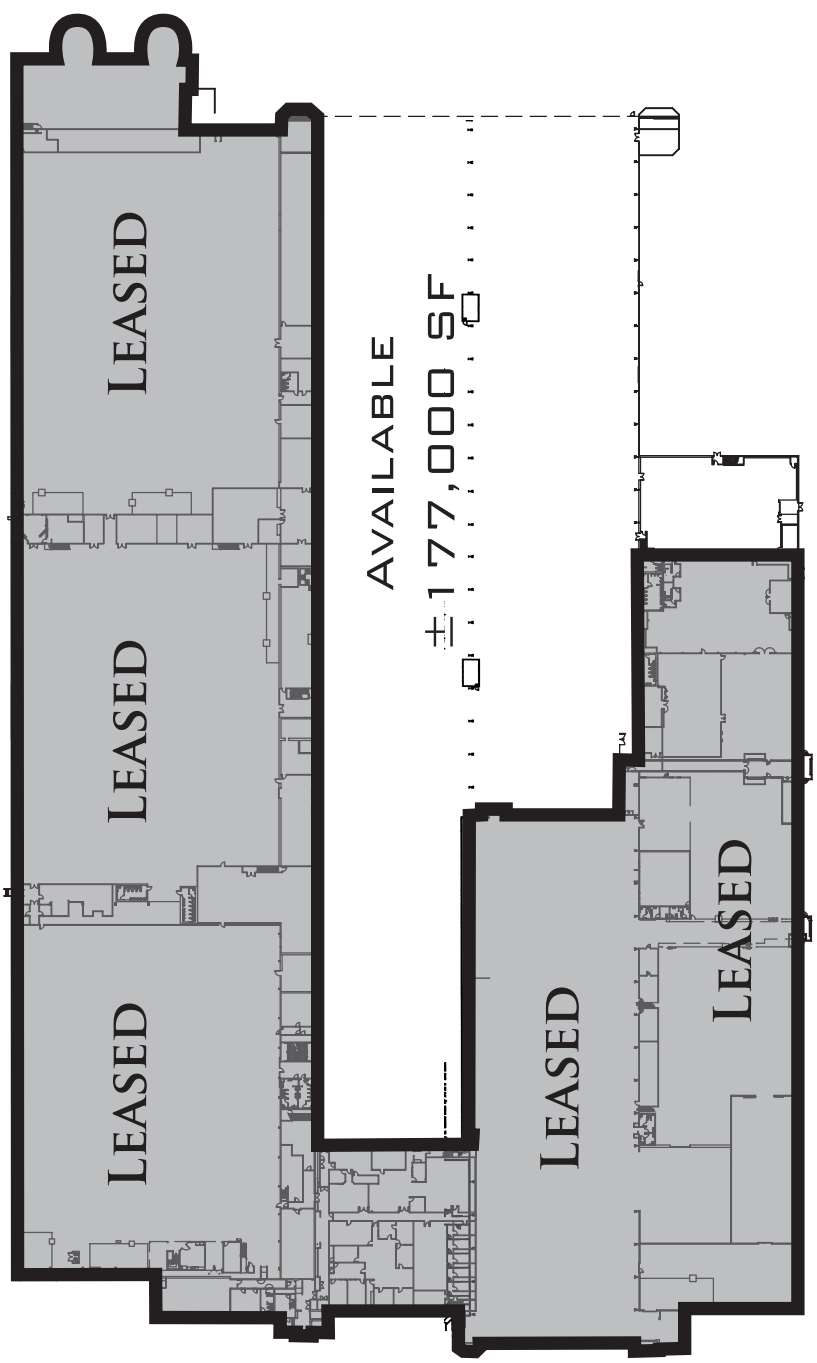
FOR MORE INFORMATION: 916.965.7100

MCCLELLAN PARK

FLOOR PLAN & LOCATION

BUILDING

251



**3028 PEACEKEEPER WAY
MCCLELLAN, CA 95652**

**FROM WATT AVENUE
NORTH:**

▸ LEFT ON PEACEKEEPER WAY
COME TO
3028 PEACEKEEPER WAY

MCCLELLAN PARK IS LOCATED
WITHIN MINUTES OF LOCAL
FREEWAYS.

RT PROVIDES TRANSIT
THAT LINKS YOU FROM THE
PARK TO THE LOCAL LIGHTRAIL.

CONTACT:

KEN GIANNOTTI
916.570.5374

GREG CUTLER
916.570.5391

LEASING@MCCLELLANPARK.COM

WWW.MCCLELLANPARK.COM