

# MCCLELLAN JET SERVICES

## AIRFIELD BUILDING

BUILDING

375

**4809 BAILEY LOOP  
MCCLELLAN, CA 95652**

**AIRPORT LOCATION: SOUTH-EAST**

### BUILDING FEATURES:

TOTAL BUILDING: 42,095 SF

- CLEAR SPAN: 235'-10"
  - HANGAR DOOR OPERATION: ELECTRIC
  - TOTAL HANGAR DOOR WIDTH: 236'-8"
  - EACH DOOR: 29'-6"
  - HANGAR DOOR HEIGHT: 33'-6"
  - TAIL DOOR HEIGHT: 43'-6"
  - POWER: 480, 220, 110
  - AFFF FOAM: YES
  - BUILDING SIGNAGE OPPORTUNITY
  - AMPLE PARKING: 1:1,000
  - ON-SITE SECURITY
  - CLOSE PROXIMITY TO WATT & I-80 FREEWAYS
  - FULL BROKER COOPERATION
- RUNWAY TO RICHES INCENTIVE PROGRAM

### LOCAL AMENITIES:

- FULL SERVICE FBO AND AIRPORT
- FULL SERVICE HOTEL & CONFERENCE CENTER
- MCCLELLAN FACILITY SERVICES (AVAILABLE FOR CONTRACT)
- ONSITE RESTAURANTS
- REGIONAL TRANSIT SHUTTLE TO LIGHTRAIL

**McClellan**  
**Jet Services** 

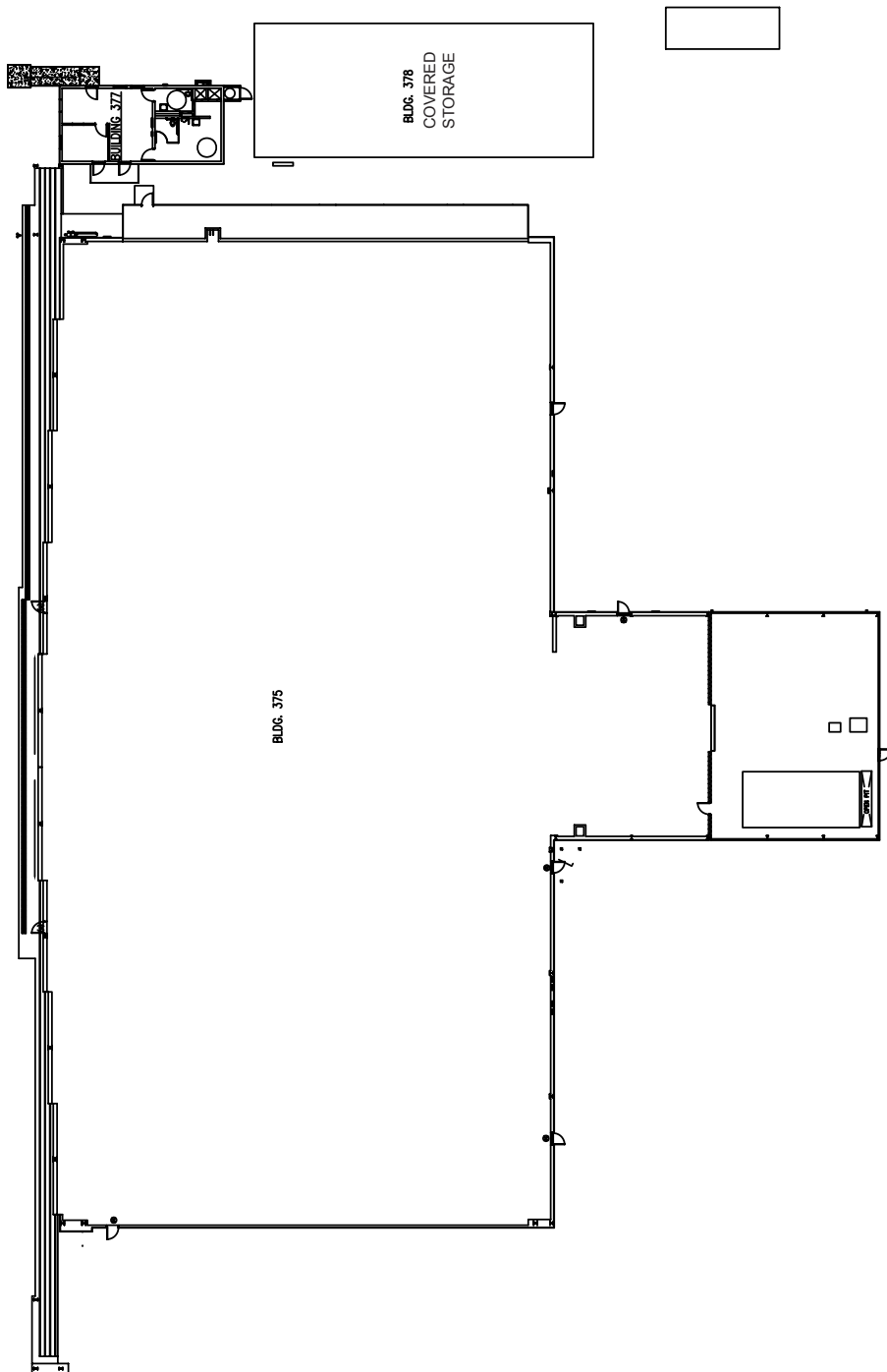
FOR MORE INFORMATION: 916.641.8970

# MCCLELLAN JET SERVICES

## FLOOR PLAN & LOCATION

BUILDING

375



**4809 BAILEY LOOP  
MCCLELLAN, CA 95652**

**FROM WATT AVENUE  
NORTH:**

- › LEFT ON PEACEKEEPER WAY
- › LEFT ON LUCE AVENUE
- › BEAR RIGHT ON BAILEY LOOP
- › ENTER THROUGH GATE 1

**COME TO  
4809 BAILEY LOOP**

\*NOTE: PRIOR AUTHORIZATION MUST BE  
GRANTED TO GAIN ACCESS TO AIRFIELD

**MCCLELLAN PARK IS LOCATED  
WITHIN MINUTES OF LOCAL  
FREEWAYS.**

**RT PROVIDES TRANSIT  
THAT LINKS YOU FROM THE  
PARK TO THE LOCAL LIGHTRAIL.**

**CONTACT:**

**SCOTT OWENS**

**916.570.5355**

[INFO@MCCLELLANJETSERVICES.COM](mailto:INFO@MCCLELLANJETSERVICES.COM)

[WWW.MCCLELLANJETSERVICES.COM](http://WWW.MCCLELLANJETSERVICES.COM)